

Commissioned by the New Jersey Housing and Mortgage Finance Agency, New Jersey's annual Point-in-Time (PIT) Count of the Homeless provides a statewide snapshot and important demographic insights on persons experiencing homelessness, with the goal of allocating housing resources and services to prevent and end homelessness.

**2,451** persons were experiencing homelessness in Essex County on January 23rd, 2024.

**54%** increase in homelessness between 2023 and 2024.

**2,167** PEOPLE WERE **SHELTERED**

**284** PEOPLE WERE **UNSHelterED**

**59%** MAN (BOY IF CHILD)  
**40%** WOMAN (GIRL IF CHILD)

**18%** CHILDREN UNDER 18  
**24%** ADULTS AGES 55+

**26%** HOMELESS 1+ YEARS

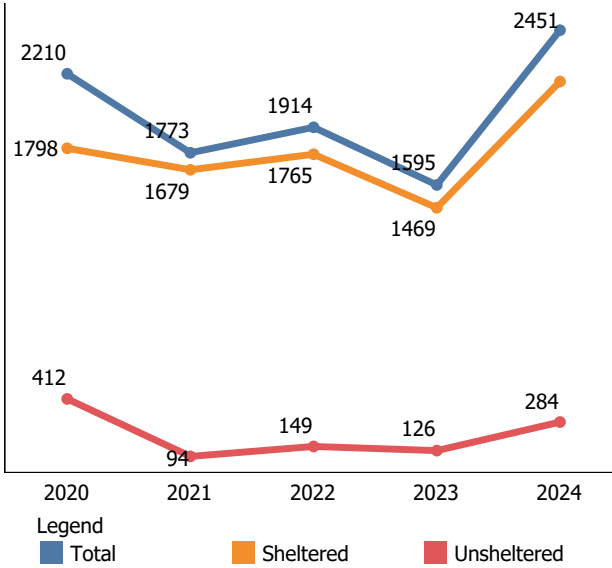
**39%** REPORTED ONE OR MORE DISABILITIES

**251** WERE CHRONICALLY HOMELESS (**10%**)

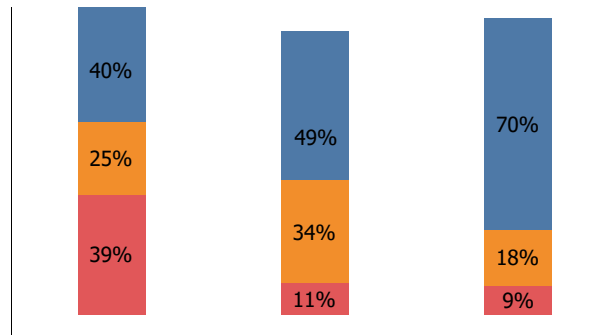
**129** WERE VICTIMS OF DOMESTIC VIOLENCE (**5%**)

**62** WERE VETERANS (**3%**)

## Yearly Comparison of Total Homeless Population



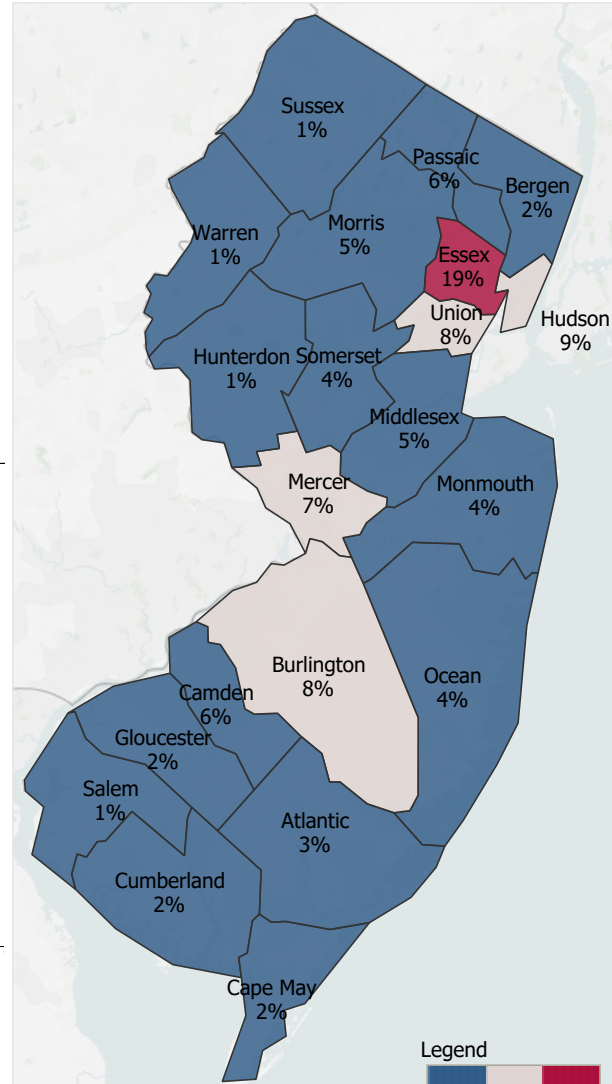
## Population by Race & Ethnicity



Total Population    Population in Poverty    Homeless Population

Legend  
 Black/African American, non-Hispanic/Latino  
 Hispanic/Latino  
 White, non-Hispanic/Latino

## Total Homeless Population by County



Legend  
 1%    19%